



## THE 16/56 h.p. A.C. "ACE" COUPÉ DE VILLE

£440

*A model combining  
all the advantages  
of a coupé with  
those of an open  
tourer.*

**SEATING.** Comfortably carries four passengers. Front seats adjustable.

**BODY PANELS.** Of heavy gauge aluminium throughout, giving lightness and freedom from rust.

**WINGS.** Of heavy gauge material, designed to eliminate mud-splashing and at the same time of pleasing appearance.

**UPHOLSTERY.** Leather or cloth upholstery to tone with colour schemes. Cushions and squabs of Latex upholstery designed to combine correct body support with comfort. Carpets to tone with upholstery.

**COLOURS.** Choice of attractive colour schemes in cellulose finish.

**DOOR LOCKS.** A special type of door lock is fitted, giving great rigidity and entire absence of rattle.

**EQUIPMENT.** Safety glass throughout. Chromium-plated radiator and fittings. Lucas 12-volt lighting and starting (five lamps). Controls on steering wheel operate dip and switch head-lamps. Stop light operated by brake pedal, reversing lights, clock, oil gauge, trip speedometer, petrol gauge, dash-reading thermometer, double arm windscreen cleaner, electrical horn, pair of direction indicators, illuminated instrument board with two cubby-holes, driving mirror, temperature thermostatically controlled, licence holder. Bumpers front and rear.

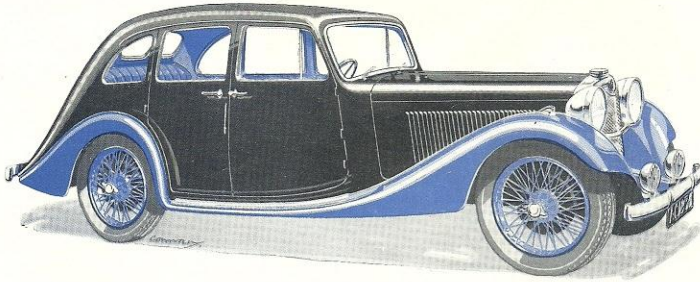
**LUGGAGE.** A luggage container and carrier, which is concealed in the closed position, is provided at the rear.

**TOOLS.** A full kit of high-grade tools is carried in a readily accessible position.

**DIMENSIONS.** Overall length 13 ft. 10 ins.  
" width 5 ft.  
" height 5 ft. 1 in. (hood up).  
Width of driving seat at elbow 4 ft.  
" rear " 3 ft. 11 ins.

**SPEED.** A comfortable 70 m.p.h.

*Ready to give you requirements  
all other you like*



## THE 16/56 h.p. A.C. "ACE" 4 DOOR FAMILY SALOON

£475

*The extra width of  
the track allows a  
rear seat of com-  
fortable width for  
3 passengers.*

**SEATING.** Comfortably carries five passengers, seats being deeply cushioned, front bucket seats adjustable.

**BODY PANELS.** Of heavy gauge aluminium throughout, giving lightness and freedom from rust.

**WINGS.** Of heavy gauge material designed to eliminate mud-splashing and at the same time of pleasing appearance.

**UPHOLSTERY.** Leather or cloth upholstery to tone with colour schemes. Cushions "Float-on-Air," squabs of Latex upholstery designed to combine correct body support with comfort. Carpets to tone with upholstery.

**COLOURS.** Choice of attractive colour schemes in cellulose finish.

**DOOR LOCKS.** A special type of door lock is fitted, giving great rigidity and entire absence of rattle.

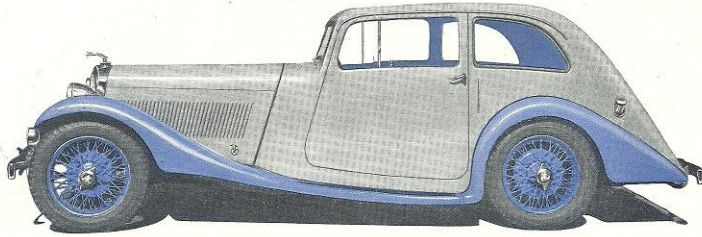
**EQUIPMENT.** Safety glass throughout. Chromium-plated radiator and fittings. Sunshine roof fitted as standard. Easily operated from directly above the driver's head. Instant rigid adjustment. Lucas 12-volt lighting and starting (five lamps). Controls on steering wheel operate dip and switch head-lamps. Stop light operated by brake pedal, reversing light, clock, oil gauge, trip speedometer, petrol gauge, dash-reading thermometer, double arm windscreen cleaner, electrical horn, pair of direction indicators, illuminated instrument board with two cubby-holes, driving mirror, temperature thermostatically controlled, licence holder Bumpers front and rear.

**LUGGAGE.** A luggage container is provided at the rear.

**TOOLS.** A full kit of high-grade tools is carried in a readily accessible position.

**DIMENSIONS.** Overall length 14 ft. 4 ins.  
" width 5 ft. 6 ins.  
" height 5 ft. 2 ins.  
Width of driving seat at elbow 4 ft.  
" rear " " 4 ft. 3½ ins

**SPEED.** A comfortable 70 m.p.h.



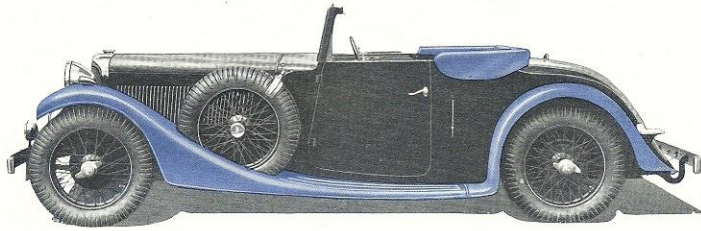
**THE 16/56 h.p. A.C. "ACE" AERO SALOON**  
**£465**

*A saloon body incorporating practical aerodynamic principles whilst still retaining comfortable accommodation and head room.*

- SEATING.** Comfortably carries four passengers, seats being deeply cushioned, front bucket seats adjustable.
- BODY PANELS.** Of heavy gauge aluminium throughout, giving lightness and freedom from rust.
- WINGS.** Of heavy gauge material designed to eliminate mud-splashing and at the same time of pleasing appearance.
- UPHOLSTERY.** Leather or cloth upholstery to tone with colour schemes. Cushions "Float-on-Air," squabs of Latex upholstery designed to combine correct body support with comfort. Carpets to tone with upholstery.
- COLOURS.** Choice of attractive colour schemes in cellulose finish.
- DOOR LOCKS.** A special type of door lock is fitted, giving great rigidity and entire absence of rattle.
- EQUIPMENT.** Safety glass throughout. Chromium-plated radiator and fittings. Sunshine roof fitted as standard. Easily operated from directly above the driver's head. Instant light adjustment. Lucas 12-volt lighting and starting (five lamps). Controls on steering wheel operate dip and switch head-lamps. Stop light operated by brake pedal, reversing light, clock, oil gauge, trip speedometer, petrol gauge, dash-reading thermometer, double arm windscreen cleaner, electrical horn, pair of direction indicators, illuminated instrument board with two cubby-holes, driving mirror, temperature thermostatically controlled, licence holder Bumpers front and rear.
- LUGGAGE.** A luggage container is provided at the rear.
- TOOLS.** A full kit of high-grade tools is carried in a readily accessible position.
- DIMENSIONS.** Overall length 15 ft.  
                   " width 5 ft.  
                   " height 4 ft. 9 ins.  
 Width of driving seat at elbow 3 ft. 10 ins.  
                   " rear " " 3 ft. 9 ins.
- SPEED.** A comfortable 70 m.p.h.

**WHO WANT AN INDIVIDUAL CAR**





**16/56 h.p. A.C. "ACE"  
DROP HEAD COUPÉ  
£435**

*An exceptionally attractive drop-head coupé of outstanding performance. The drop head is so designed that it folds into a recess in the body when lowered, giving an uninterrupted view all round.*

**SEATING.** Will comfortably seat two passengers in the front, and two in the roomy upholstered dickie. A spacious locker is provided for coats, parcels, maps, etc.

**EQUIPMENT.** Safety glass throughout. Chromium-plated radiator and fittings. Lucas 12-volt lighting and starting (five lamps). Controls on steering wheel operate dip and switch headlamps. Stop light operated by brake pedal, reversing light, clock, oil gauge, trip speedometer, petrol gauge, dial-reading thermometer, double arm windscreen cleaner, electrical horn, pair of direction indicators, illuminated instrument board with two cubby-holes, driving mirror, temperature thermostatically controlled, licence holder. Bumpers front and rear.

**LUGGAGE.** A luggage carrier, which is concealed in the closed position, is provided at the rear.

**TOOLS.** A full kit of high-grade tools is carried in a readily accessible position.

**BODY PANELS.** Of heavy gauge aluminium throughout, giving lightness and freedom from rust.

**WINGS.** Of heavy gauge material, designed to eliminate mud splashing and at the same time of pleasing appearance.

**UPHOLSTERY.** Leather or cloth upholstery to tone with colour schemes. Cushions and squabs of Latex upholstery designed to combine correct body support with comfort. Carpets to tone with upholstery.

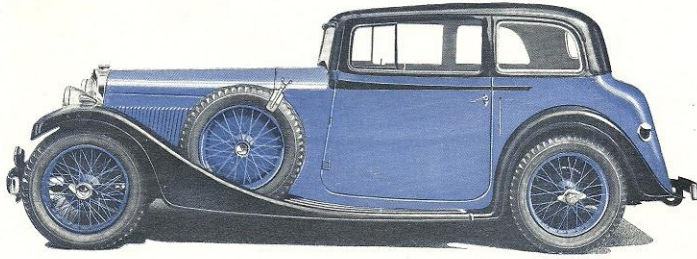
**COLOURS.** Choice of attractive colour schemes in cellulose finish.

**DOOR LOCKS.** A special type of door lock is fitted, giving great rigidity and entire absence of rattle.

**DIMENSIONS.**  
Overall length 13 ft. 10 ins.  
" width 5 ft.  
" height 4 ft. 8 ins.  
Width of driving seat at elbow 4 ft.  
" rear " " 2 ft. 10 ins.

**SPEED.** A comfortable 70 m.p.h.





**THE 16/56 h.p. A.C. "ACE"  
GREYHOUND 2 DOOR SALOON  
£435**

*A model combining  
all the A.C. grace  
with spacious  
accommodation  
and added comfort.*

**SEATING.** Comfortably carries four passengers. Front seats adjustable.

**BODY PANELS.** Of heavy gauge aluminium throughout, giving lightness and freedom from rust.

**WINGS.** Of heavy gauge material, designed to eliminate mud-splashing and at the same time of pleasing appearance.

**UPHOLSTERY.** Leather or cloth upholstery to tone with colour schemes. Cushions "Float-on-Air" and squabs of Latex upholstery designed to combine correct body support with comfort. Carpets to tone with upholstery.

**COLOURS.** Choice of attractive colour schemes in cellulose finish.

**DOOR LOCKS.** A special type of door lock is fitted, giving great rigidity and entire absence of rattle.

**EQUIPMENT.** Safety glass throughout. Chromium-plated radiator and fittings. Sunshine roof fitted as standard which fits semi-flush. Easily operated from directly above the driver's head. Instant rigid adjustment. Lucas 12-volt lighting and starting (five lamps). Controls on steering wheel operate dip and switch head-lamps. Stop light operated by brake pedal, reversing light, clock, oil gauge, trip speedometer, petrol gauge, dash-reading thermometer, double arm windscreen cleaner, electrical horn, pair of direction indicators, illuminated instrument board with two cubby-holes, driving mirror, temperature thermostatically controlled, licence holder. Bumpers front and rear.

**LUGGAGE.** A luggage container and carrier, which is concealed in the closed position, is provided at the rear.

**TOOLS.** A full kit of high-grade tools is carried in a readily accessible position.

**DIMENSIONS.** Overall length 13 ft. 10 ins.  
" width 5 ft.  
" height 5 ft.  
Width of driving seat at elbow 3 ft. 11 ins.  
" rear " " 3 ft. 10 ins.

**SPEED.** A comfortable 70 m.p.h.



**THE 16/66 h.p. A.C. "ACE"  
FULL SPORTS OPEN 4 SEATER  
£450**

*Specially designed  
and introduced to  
appeal to the  
sportsman, it has  
been built by  
enthusiasts for  
enthusiasts.*

- SEATING.** Comfortably carries four passengers. Bucket seats at front adjustable.
- EQUIPMENT.** Hood and cover of special fadeless material with tonneau cover to match. Metal frame side-screens are not disturbed when hood is raised or lowered. Side screens are stored in a readily accessible rear locker. Windscreens can be folded flat over scuttle and is fitted with dual electrical screen wiper and safety glass. Lucas 12-volt lighting and starting system (five lamps). Controls on steering wheel operate dip and switch headlamps. Chromium-plated fittings. Stop light operated by brake pedal, reversing light, clock, oil gauge, 5 in. speedometer and revolution counter, petrol gauge, dash-reading thermometer, electrical horn, pair of direction indicators, illuminated instrument board with two cubby-holes, driving mirror, temperature thermostatically controlled, licence holder.
- BODY PANELS.** Of heavy gauge aluminium throughout, giving lightness and freedom from rust.
- WINGS.** Of heavy gauge material, designed to harmonise with coachwork.
- UPHOLSTERY.** Leather upholstery to tone with colour schemes. Cushions "Float-on-Air" squabs of Latex upholstery designed to combine correct body support with comfort. Carpets to tone with upholstery.
- COLOURS.** Choice of attractive colour schemes in cellulose finish.
- DOOR LOCKS.** A special type of door lock is fitted, giving great rigidity and entire absence of rattle.
- TOOLS.** A full kit of high-grade tools is carried in a readily accessible position.
- DIMENSIONS.** Overall length 14 ft.  
" width 5 ft.  
" height 4 ft. 8 ins. (with hood up 4 ft. 10 ins.).  
Width of driving seat at elbow 3 ft. 8 ins.  
" rear " 3 ft. 8 ins.
- SPEED.** 80 m.p.h.
- SPECIAL FEATURES.** 3 S.U. Carburettors, brake horse power 66, engine specially tuned. Consumption 22-27 m.p.g.

**16/66 h.p. A.C. "ACE" FULL SPORTS SALOON  
£495**

As above chassis specification, but fitted with "ACE" AERO saloon body.